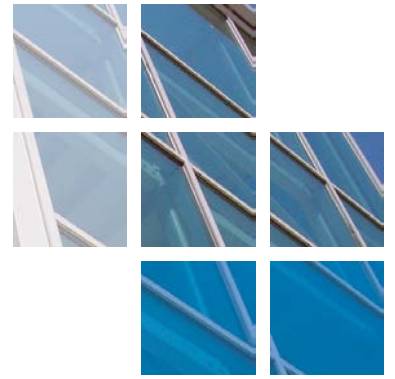




comar

ARCHITECTURAL ALUMINIUM SYSTEMS



Collingwood College, Camberley, Surrey.



Comar Architectural Aluminium Systems and their approved fabricator Alimatic Ltd., have recently completed a full refurbishment project to provide a whole new building envelope to Collingwood College, Camberley, Surrey. The design brief was for the façade to be modern, clean and contemporary whilst complementing the school colour. The College and the Local Authority are extremely happy with the end result and are now planning the refurbishment of an adjacent school. Intensive consultations took place as the brief for this project required Alimatic to specially design many elements, including the corner panels to ensure the smooth installation.

For the sleek modern façade, Comar 6 curtain walling was specified. Comar 6 curtain walling is a versatile thermally efficient system designed to integrate panels and glass of different widths into the façade with special profiles to include opening vents and doors. The design of Comar 6 makes it ideal for complex faceted curtain walls as well as sheer glazed façades. Comar 6 offers a slim 50mm sight line with a multitude of transoms and mullions to cater for all deflection loads and grid centres.

For the opening vents, Comar 5P.i. thermally efficient polyamide insulated aluminium windows were installed offering outstanding weather performance and low U-values. Comar 5P.i is a 60mm window system that reduces heat loss through the trademark P.i thermal break ensuring low U-values, so energy bills are minimised. Comar 5P.i is available in a variety of configurations and can be manufactured into casement, tilt and turn, pivot, top swing and sliding windows. The windows installed at the College were top hung/fixed light composites.

In a busy educational environment, Comar 7 commercial door sets are a natural choice. Not only are they available in swing, pivot, sliding, auto-sliding and sliding folding, they have been designed specifically for educational applications where high traffic solutions are required. For safety, the Comar 7 swing doors were fitted with anti-finger trap stiles, Axim soft touch panic exit device and Axim concealed transom closers which were hung directly from the Comar 6 frame. All aluminium systems were finished in Hipca White RAL 9910 (semi gloss) polyester powder coat.

All Comar approved fabricators are required to have the technical expertise to attend pre-site meetings and provide detailing. Comar Architectural Advisors and Alimatic Ltd., liaised closely with the specifiers to provide design advice, which ensured the project conformed to planning requirements, ran smoothly and met site deadlines.

PROJECT DETAILS

Architects
Mouchel

Fabricator
Alimatic Limited

Main Contractor
Apollo Construction

Project Value
£350,000

System Used
Comar 5P.i, 6 & 7

Location
Camberley, Surrey.

Collingwood College, Camberley, Surrey.

Comar, the leading British Aluminium Systems House, designs and extrudes over 700 aluminium profile sections. A team of specification consultants provide project-by-project design, calculations and NBS specification advice to architects. Comar distributes profiles to a nationwide network of fabricators for manufacture and installation.

Retail Aluminium Architecture

Inherent strength and slim sight-lines make Comar aluminium the specification product of choice for all retail outlets. Comar offers extensive systems which integrate to provide aesthetic appeal to potential retail customers.

Step through Comar 7, an extensive range of sliding, automatic, folding or swing doors. Overhead Comar 6 creates sloped, pitched or barrel vaults which cast light throughout the retail complex or outlet. Comar 1,3,4 & 8 integrate with Comar 7 to provide shop-fronts with various angle returns and height capability. Comar 6 curtain walling houses the envelope with a variety of cover caps which complement panels and glazing.

Commercial Aluminium Architecture

Statement of function is the key element of commercial building design. From designing industrial units to corporate headquarters the flexibility of Comar Aluminium Systems can integrate with panel systems and provide curtain wall with opening vents and windows in a variety of configurations. Comar can

powder coat the aluminium system to your RAL, BS or Syntha Pulvin colour to complement the façade.

Education & Public Building Aluminium Architecture

Comar have worked in conjunction with Local Authorities to design specific products for use in the education and public building sector. The nature of public building construction demands cost effective, robust solutions. Comar 2 is a cost saving alternative to curtain walling, creating glazed façades for medium rise buildings, stairwells and entrances. Comar 2 integrates with Comar 5 and 5LT windows with espagnolette locking handles to provide security and Comar 7 Doors with anti-finger traps to provide safety. Comar's integrated systems ensure a cost effective, aesthetic façade with security and safety as standard.

RIBA CPD Provider

Comar provides RIBA assessed CPD Seminars to architects and specifiers throughout the UK. There are two seminars available; please complete the feedback for further details.

**Comar Architectural Aluminium Systems,
Unit 5, The Willow Centre,
17 Willow Lane, Mitcham,
Surrey. CR4 4NX.**

**| tel: 020 8685 9685 |
| fax: 020 8646 5096 |
| email: info@parksidegrp.co.uk |**



GROUND FLOOR TREATMENT

COMAR 1 Single Glazed GFT

COMAR 4 Single Glazed GFT

COMAR 8 Fin/Bead GFT

CURTAIN WALLING

COMAR 6 Curtain Walling, Stick Build & Ladder Frame, Square Cut & Step Cut.

DOORS

COMAR 7 Doors, Folding, Sliding, Swing & Polyamide Rebated.

WINDOWS

COMAR 5 Windows, 45mm, 50mm & 60mm Polyamide.

WINDOW WALLING

COMAR 2 Feature Wall T.B. Window Walling, Thermally Broken.

fax-backfax-backfax-backfax-back

NAME:

ADDRESS:

COMPANY:

TEL:

FAX:

EMAIL:

I would like to hear more about Comar Architectural Aluminium Systems (Please tick):

Ground Floor Treatment
Windows

Curtain Walling
Doors

or I would like to be contacted by my local Comar project consultant.

Please fax this form back to 020 8685 9696

